



**Leicester, Leicestershire
and Rutland**

Leicestershire Health Overview and Scrutiny Committee

LLR Vaccination & Immunisation Programme

Mike Sandys, Director of Public Health & Kay Darby, Chief Nurse, LLR ICB



A proud partner in the:

**Leicester, Leicestershire
and Rutland**
Health and Wellbeing Partnership



Purpose of report

- To update the committee on changes in the responsibility for Vaccination and Immunisation within the NHS and the implementation of the national Vaccination strategy
- To brief the committee on actions to increase the uptake of HPV vaccination
- To provide further detail to the committee on childhood immunisations uptake and associated improvement actions more generally
- To update on measles cases and COVID



Childhood Immunisation Changes and Improvements

- General Practice deliver most childhood vaccinations, supported by School Aged Immunisation Service (Leicestershire Partnership Trust) for in-school programmes.
- Currently commissioned and led by the Regional NHS England Screening and Immunisation Team, transfer to ICB will take place in April 2025
- 2024/5 is a transitional year with new local governance arrangements being set up from April 2024 (see later)
- New Child Health Information Service provider from March 2024, working with practices with low childhood immunisation uptake and longest waiting lists
- Initiatives developed for Covid-19 vaccination are being expanded to improve vaccine uptake across all programmes:
 - Super vaccinators - upskilled nurses that can offer the full range of childhood vaccines (as well as seasonal and adult vaccines)
 - Roving vaccination vehicles - to offer ease of access, convenience and help address immunisation coverage across all communities
 - Central booking service to signpost and book appointments by telephone, for patients that don't want to book on-line
 - Tailored clinics for key groups such as learning disability, immunosuppressed children
 - Community transport to improve access



National Vaccination Strategy

- Published December 2023, the strategy aims to:
 - Build on the success of the NHS COVID-19 vaccination programme
 - Increase overall uptake and coverage of vaccinations (life-course, seasonal programmes and outbreaks)
 - Reduce disparity in uptake, so that every community in the country has the protection it needs.
- To be achieved by:
 - Delegation of commissioning responsibility to transfer from NHS England to ICBs by April 2025
 - Offer of outreach vaccination services in convenient locations, to support uptake in underserved populations i.e. shopping centres, supermarkets and community centres as well as GP and Community Pharmacy.
 - Provide multiple vaccinations for the whole family i.e. covid and flu alongside opportunistic HPV and MMR
 - Multi-disciplinary teams providing wider health advice and interventions (blood pressure, diabetes checks, or mental health and dental information) to make every contact count
 - An increased role for Community Pharmacy with an expansion in the range of vaccinations offered by community pharmacies.
 - Improved access to information via the NHS app that will be expanded allowing patients to book appointments, see invitation alerts and get appointment notifications.
- To be delivered by 2025/6



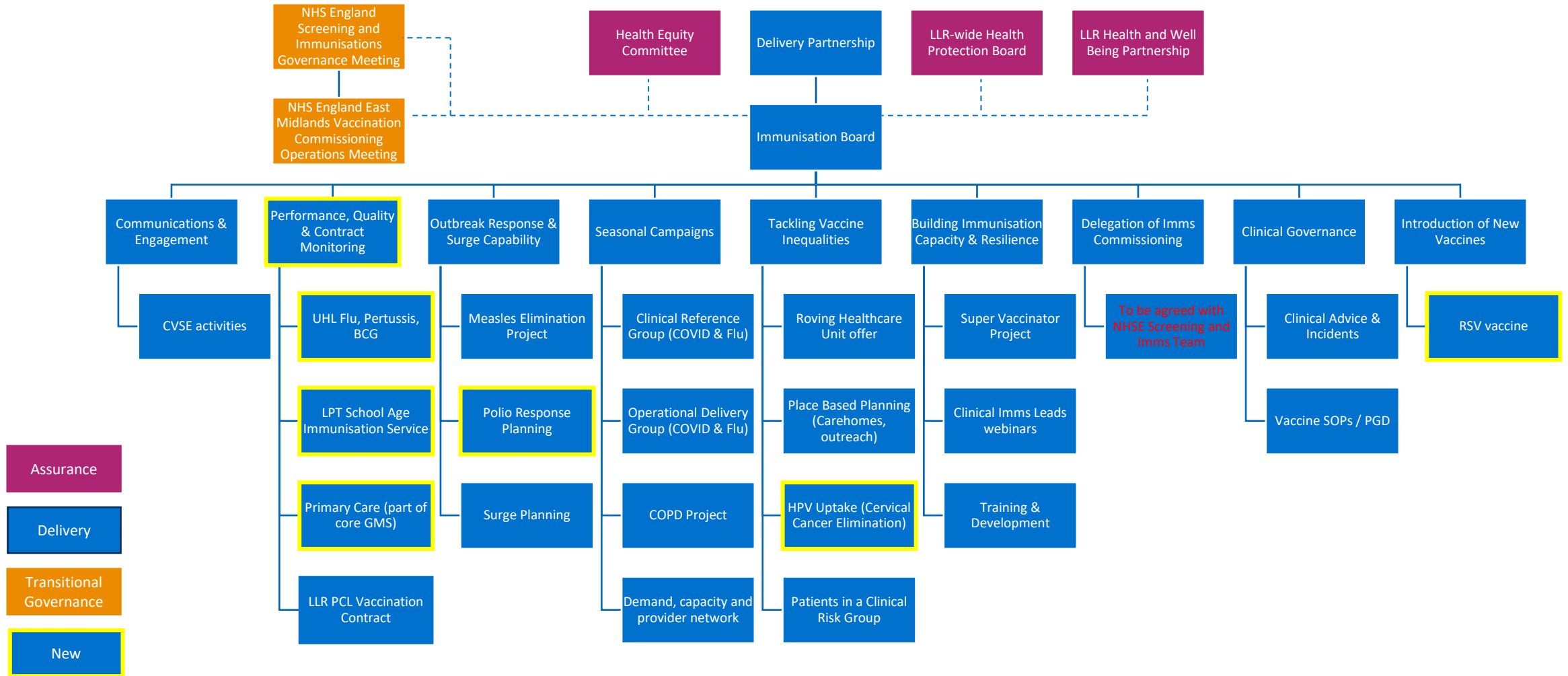
Local Implementation

New LLR Immunisation Board to be set up from April 2024, to build on the success of the Covid-19 vaccination programme and include all vaccinations:

- have oversight of all vaccination programmes (life-course, seasonal campaigns and outbreaks).
- provide leadership to support improved vaccine coverage and uptake for all communities.
- ensure local oversight of the delegation of commissioning responsibilities from NHS England to the ICB by April 2025.
- engagement and contribution from all key stakeholders.
- fit with the wider prevention agenda in the System to ensure community interventions focus on more than just vaccination delivery.
- a reporting mechanism into the corporate governance structure of the ICB, as well as the wider system architecture.

Membership will include representation from across the system, including Directors of Public Health and associated representatives.

Proposed Immunisation Governance Structure



HPV Vaccination Uptake

	<i>Leicestershire</i>			
<i>Consent platform</i>	<i>E-consent</i>			
	<i>Denominator</i>	<i>Vaccinated</i>	<i>% Uptake</i>	<i>Outstanding</i>
<i>2020/21 HPV</i>				
<i>Girls Cohort 18 - HPV 1</i>	4,134	3,577	86.5%	557
<i>Girls Cohort 18 - HPV 2</i>	4,134	3,189	77.1%	945
<i>Boys Cohort 2 - HPV 1</i>	4,538	3,705	81.6%	833
<i>Boys Cohort 2 - HPV 2</i>	4,538	3,216	70.9%	1,322
<i>2021/22 HPV</i>				
<i>Girls Cohort 19 – HPV 1</i>	4,049	3,170	78.3%	879
<i>Girls Cohort 19 – HPV 2</i>	4,049	2,029	50.1%	2,020
<i>Boys Cohort 3 – HPV 1</i>	4,500	3,200	71.1%	1,300
<i>Boys Cohort 3 – HPV 2</i>	4,500	2,055	45.7%	2,445
<i>2022/23 HPV</i>				
<i>Note – pending validation, published data may vary</i>				
<i>Girls Cohort 20– HPV 1</i>	4254	3457	81.3	
<i>Girls Cohort 20 – HPV 2</i>	4254	2723	64.0	
<i>Boys Cohort 4 – HPV 1</i>	4556	3356	73.7	
<i>Boys Cohort 4 – HPV 2</i>	4556	2454	53.9	

Note: schedule has now changed to being a single dose

Improving HPV uptake

- HPV awareness video being recorded by local GP and 2 students at Beauchamp college on 11th March.
- HPV Leaflets (in several languages) being taken to all awareness events the Cancer team are attending between now and vaccination period.
- 2 vaccination and awareness events being delivered on 4th April (Haymarket) and 5th April (Beaumont Leys Leisure Centre and shopping centre)
- School Aged Immunisation Service vaccination team will circulate materials to school Head Teachers to send on to parents.
- School Aged Immunisation Service vaccination team will commence routine HPV delivery in senior schools throughout summer term
- Uptake data will be reviewed once received, to inform some targeted support to schools where uptake is particularly low.
- System level Cervical Cancer Oversight Group recently established to lead longer term action plan to eradicate cervical cancer by 2040:
 - Two workstreams to underpin this: Cervical Screening and HPV
 - Data collection and analysis, delivery model scoping and action planning underway

Childhood Immunisation: 12 months

Cohort	Indicator	Standard	Area	Q4 2020/21	Q1 2021/22	Q2 2021/22	Q3 2021/22	Q4 2021/22	Q1 2022/23	Q2 2022/23	Q3 2022/23	Q4 2022/23	Q1 2023/24	Q2 2023/24
12 months	12m Denominator	N/A	England	144864	146059	151502	145098	140604	147953	158919	154232	142761	144242	151101
			Leics City	1856	1768	1776	1643	1659	1856	1105	1170	1085	1112	1122
			Leic'shire	1609	1614	1723	1554	1634	1639	1786	1781	1692	1608	1730
			Rutland	72	80	76	82	79	81	75	93	70	72	70
	12m DTaP/IPV/Hib %	95	England	91.6	91.5	91.3	92.0	91.9	92.0	92.1	91.9	91.6	91.5	91.3
			Leics City	92.4	91.6	90.3	91.1	90.5	91.9	93.7	91.4	90.9	91.3	92.4
			Leic'shire	96.0	96.0	95.9	96.5	95.5	96.2	96.2	96.5	95.9	94.9	94.0
			Rutland	94.4	97.5	98.7	96.3	97.5	96.3	96.0	95.7	95.7	88.9	95.7
	12m PCV %	95	England	93.4	93.7	93.3	94.1	94.1	94.0	94.1	94.0	93.6	93.6	93.4
			Leics City	94.7	94.2	92.5	93.3	93.8	94.1	96.7	94.3	93.9	94.3	94.8
			Leic'shire	94.7	97.4	97.1	93.3	97.0	97.7	97.1	97.4	96.0	96.5	95.7
			Rutland	98.6	97.5	100.0	98.8	98.7	96.3	97.3	97.8	96.9	91.7	95.7
	12m Rota %	95	England	90.0	90.2	89.2	90.4	90.5	89.3	89.0	89.3	89.0	88.7	88.2
			Leics City	89.7	89.6	84.6	89.2	85.6	85.5	88.0	86.4	86.7	86.9	85.8
			Leic'shire	94.7	94.5	94.3	89.2	94.6	94.8	93.4	96.6	93.7	92.5	91.7
			Rutland	87.5	93.8	92.1	98.8	97.5	95.1	94.7	94.6	92.9	86.1	94.3
	12m MenB %	95	England	91.8	91.7	91.5	92.0	92.0	91.8	91.9	91.6	91.2	91.2	91.0
			Leics City	91.8	91.3	90.6	91.5	89.6	91.2	93.2	90.7	89.9	89.7	91.4
			Leic'shire	96.1	96.2	96.1	91.5	95.3	96.1	96.0	96.1	95.7	94.9	94.0
			Rutland	97.2	97.5	98.7	96.3	97.5	96.3	97.3	94.6	95.7	88.9	95.7

Childhood Immunisation: 24 months

Cohort	Indicator	Standard	Area	Q4 2020/21	Q1 2021/22	Q2 2021/22	Q3 2021/22	Q4 2021/22	Q1 2022/23	Q2 2022/23	Q3 2022/23	Q4 2022/23	Q1 2023/24	Q2 2023/24
24 months	24m Denominator	N/A	England	148863	153721	160838	153378	147510	149055	154388	149108	144469	151846	163654
			Leics City	1139	1174	1206	1099	1103	1139	1205	1146	1030	1007	1134
			Leic'shire	1614	1695	1851	1745	1655	1681	1766	1613	1694	1692	1880
			Rutland	88	78	91	72	78	85	80	82	83	80	69
	24m DTaP/IPV/Hib3 %	95	England	94.0	93.8	93.4	93.0	93.0	92.9	92.9	93.0	93.0	92.8	92.9
			Leics City	94.4	94.2	93.4	93.1	93.2	93.9	92.1	92.9	91.8	92.6	94.3
			Leic'shire	96.5	97.1	96.5	96.8	96.5	96.5	96.3	96.3	95.8	96.5	96.6
			Rutland	97.7	96.2	98.9	97.2	97.4	96.5	97.5	98.8	97.6	97.5	95.7
	24m PCV Booster %	95	England	94.0	93.8	93.4	93.0	93.0	92.9	89.4	88.5	89.3	89.0	88.8
			Leics City	88.7	89.6	87.8	86.3	87.7	88.1	88.1	87.4	84.3	86.0	89.2
			Leic'shire	95.1	96.0	95.1	95.0	94.6	95.4	94.7	94.5	95.0	95.2	95.0
			Rutland	97.7	96.2	98.9	95.8	97.4	91.8	97.5	92.7	97.6	92.5	94.2
24m Hib/MenC booster %	95	England	89.1	88.9	88.3	88.3	89.1	89.3	89.5	88.9	89.2	89.5	89.2	
		Leics City	88.7	89.8	88.1	86.7	88.2	89.2	89.2	88.0	85.8	87.9	90.0	
		Leic'shire	82.0	96.0	95.1	94.9	94.9	95.8	94.6	95.0	95.1	95.6	95.3	
		Rutland	96.6	96.2	98.9	94.4	97.4	91.8	97.5	92.7	97.6	93.8	92.8	
24m MMR1 %	95	England	89.3	89.0	88.6	88.9	89.7	89.7	89.7	89.0	89.5	89.5	89.4	
		Leics City	89.3	89.4	88.5	88.2	88.5	89.2	89.8	88.6	87.5	88.4	90.1	
		Leic'shire	95.1	96.0	94.8	94.7	94.7	95.5	94.7	95.0	95.1	95.7	95.1	
		Rutland	95.5	96.2	98.9	93.1	96.2	92.9	97.5	92.7	97.6	93.8	94.2	
24m MenB Booster %	95	England	88.5	88.5	88.1	88.1	88.6	88.5	88.6	87.8	88.4	88.1	88.0	
		Leics City	87.3	88.1	87.2	84.5	86.0	86.7	87.1	85.7	83.5	84.3	88.4	
		Leic'shire	94.1	95.1	94.9	94.8	93.8	94.8	94.3	94.0	94.0	94.7	94.6	
		Rutland	95.5	96.2	98.9	91.7	96.2	91.8	97.5	93.9	96.4	92.5	94.2	

Childhood Immunisation: 5 years

Cohort	Indicator	Standard	Area	Q4 2020/21	Q1 2021/22	Q2 2021/22	Q3 2021/22	Q4 2021/22	Q1 2022/23	Q2 2022/23	Q3 2022/23	Q4 2022/23	Q1 2023/24	Q2 2023/24
5 years	5y denominator	N/A	England	167046	171806	178424	169957	162668	168324	175293	170920	160488	166198	172370
			Leics City	1189	1299	1370	1279	1215	1234	1343	1251	1198	1225	1195
			Leic'shire	1932	2031	1902	1924	1828	1822	2052	1986	1788	1960	2041
			Rutland	87	103	129	91	86	108	103	113	96	91	81
	5y DTaP/IPV/Hib %	95	England	95.3	95.1	94.6	94.6	94.5	94.0	93.5	93.5	93.3	93.1	92.8
			Leics City	95.6	95.5	95.1	94.4	94.9	95.1	92.9	92.7	93.9	91.5	92.8
			Leic'shire	98.4	97.9	97.7	97.5	97.9	98.2	96.2	97.1	96.8	96.8	96.1
			Rutland	100.0	98.1	98.4	95.6	98.8	98.1	100.0	95.6	99.0	95.6	95.1
	5y MMR1 %	95	England	94.3	94.1	93.7	93.5	93.5	92.9	92.9	92.9	92.7	92.5	92.3
			Leics City	94.8	95.6	94.2	92.5	92.8	94.2	93.6	93.3	93.7	91.8	91.4
			Leic'shire	98.0	97.5	97.2	96.6	97.4	97.6	96.7	97.5	97.0	92.2	96.3
			Rutland	100.0	97.1	96.9	94.5	96.5	96.3	97.1	97.5	96.9	96.7	96.3
	5y MMR2 %	95	England	86.4	86.3	85.5	85.5	85.9	84.4	84.7	85.2	85.0	83.9	83.8
			Leics City	86.8	84.4	83.4	80.8	82.9	80.6	79.6	79.9	81.5	79.5	79.3
			Leic'shire	95.4	95.2	93.8	93.5	94.5	95.9	91.6	92.2	92.3	91.2	91.1
			Rutland	98.9	97.1	92.2	93.4	95.3	92.6	91.3	93.8	86.5	91.8	90.1
	5yDTaP/IPV Booster %	95	England	85.1	84.8	84.0	84.2	84.6	83.0	83.4	84.0	84.0	82.8	82.7
			Leics City	85.1	82.1	80.8	78.3	80.6	76.7	76.7	77.9	78.8	75.3	75.6
			Leic'shire	94.3	93.9	93.1	92.6	92.1	94.0	90.0	89.9	84.4	89.6	89.2
			Rutland	96.6	93.2	93.0	91.2	95.3	98.1	95.1	86.7	91.3	95.6	95.1
	5y HibMenC Booster %	95	England	92.5	92.6	92.0	92.0	92.0	91.3	91.2	91.0	90.7	90.5	90.2
			Leics City	89.4	89.8	88.0	86.3	87.4	86.7	88.0	86.7	86.0	82.2	82.1
			Leic'shire	96.5	95.9	95.9	95.1	95.5	91.7	95.1	95.9	94.4	95.1	94.2
Rutland			98.9	97.1	93.8	91.2	94.2	96.3	97.1	95.6	92.7	94.5	96.3	



Measles Outbreak

- Rising number of cases in Leicester
- Majority of cases are in unvaccinated children <16 years
- In each case notified by UKHSA following risk assessment, the ICB vaccination team make the following rapid response:
 1. alert the patient's GP practice and practices in the immediate vicinity of the patient's home address
 2. offer the patient's school a roving vaccination unit visit, supplemented with a webinar for the pupils' parents
 3. offer the notified GP practices use of the roving unit to take MMR vaccinations into the heart of their communities.

Summary of Activity Undertaken During Measles Outbreak

Activity	Lead
Alerts / messaging associated with reported cases e.g. warn & inform letters	UKHSA
Webinars delivered to primary care to raise awareness & encourage additional capacity	ICB
Meetings with individual practices in affected communities to offer bespoke support, resources & encourage local collaboration	ICB
Webinars delivered to community pharmacies, health and care staff, clinical leads, schools and parents to raise awareness of signs & symptoms & signposting	ICB
Community messaging & awareness raising & national/regional/local media activities	ICB / Public Health
School alerts / messaging & on-going communications	Public Health
Communication with imams & other faith leaders	Public Health
Ordering cap eased porcine-gelatine free MMR vaccine for practices	NHSE
Commissioned roving healthcare unit & clinical provider to offer 2 clinics per week during February & March	ICB
Leicester IMT established with several "cells" underneath to ensure an effective, collaborative approach	ICB / Public Health
Immunoglobulin inpatient & community pathways confirmed	ICB / UHL
GPs provided with direct phone line into the LRI emergency department to alert of potential cases being directed to hospital	UHL
Opportunistic MMR vaccination team in LRI emergency department providing vaccinations to patients at clinician's request	UHL

COVID-19 & flu vaccination uptake AW 2023/24

LLR AW 2022/23 COVID-19 closing uptake: 61.3%

Location / COVID-19	Booster eligible population	Booster doses given to eligible population	% Booster doses given
LLR (31/01/24)	398,089	207,302	52.1%
Rutland (31/01/24)	17,184	11,439	66.6%
City (31/01/24)	122,035	46,813	36.4%
County (31/01/24)	261,513	161,144	58.2%

26

LLR AW 2022/23 Flu closing uptake: 53.4%

Location / Flu	Flu eligible population	Flu doses given to eligible population	% Flu doses given
LLR (20/02/24)	618,139	323,814	52.4%
Rutland (20/02/24)	24,267	16,514	68.0%
City (20/02/24)	213,877	86,763	40.6%
County (20/02/24)	379,970	220,537	58.0%

(Source: Foundry)

COVID-19 Spring 2024 Eligible Cohorts

Eligible Cohorts

1. Adults aged 75 years & over

2. Residents in a care home for older adults

3. Individuals aged 6 months & over who are immunosuppressed (as per tables 3 & 4 in the [Green Book](#)) due to health condition or treatment, eg:

- Chemotherapy, radiotherapy, solid organ transplant, bone marrow/stem cell transplant, HIV infection, genetic disorders affecting immune system
- Treatments involving systemic steroids
- History of haematological malignancy including leukaemia, lymphoma & myeloma
- Long-term immunosuppressive treatments for conditions eg rheumatoid arthritis, inflammatory bowel disease, psoriasis
- Children due to receive planned immunosuppressive therapy & those with auto-immune diseases



COVID-19 Spring 2024 Vaccination Campaign: Key Dates

- 27 February: Expression of interest process open for new community pharmacists interested in joining the vaccination programme
- 29 February: NHS England mobilisation guide due
- 15 April: Commence care home vaccinations
- 15 April: NHS 119 telephone lines open and first invites are scheduled to be received by eligible patients
- 22 April: Vaccinations commence for all other eligible cohorts
- 30 June: Final day for spring COVID-19 vaccinations.